



Supplier to the World Since 2002





CMF Global, Inc. is a California corporation which supplies pipes, valves, and fittings for a wide variety of applications, throughout the world. CMF Global supplies High Density Polyethylene (HDPE) fusion machines and small hydroelectric power generating equipment. CMF Global owns several proprietary, branded products which are specified by name on important domestic and international irrigation projects.

CMF Global supplies two main market segments: Infrastructure and Irrigation. Each of these markets accounts for approximately 50 percent of our business.

For the infrastructure market, CMF Global supplies piping systems for sewers, water transmission/distribution, industrial and mining applications, oil and gas gathering, gas distribution, hydroelectric power generation, Factory Mutual (FM) approved fire suppression systems, drainage, and storm water retention/detention applications.

For the irrigation market, CMF Global supplies complete or partial irrigation systems which we can deliver anywhere in the world. When we supply a complete

irrigation system, we include every item, no matter how small, needed to install the irrigation system, from pump station to sprinklers and including but not limited to pipes, valves, wire, controllers, sprinklers, and fittings.

Our heat-fused HDPE piping systems have a **zero allowable leakage rate**. Water conservation is very important to us.

PRODUCTS

HDPE Pipe, Valves, and Fittings – AquaFuse and CorrDrain

CMF Global is the Original Equipment Manufacturer (OEM) of AquaFuse High Density Polyethylene (HDPE) piping systems for infrastructure or irrigation applications and CorrDrain HDPE corrugated piping systems for drainage and storm water retention/detention applications.

CMF Global's AquaFuse piping system consists of (1) high quality HDPE pipeline components – pipe, valves, fittings, (2) the AquaFuse 25-year limited warranty against manufacturing defects for potable water and irrigation applications, and (3) on-site, hands-on AquaFUSION training.





Because it is manufactured from a very advanced PE4710 resin, the AquaFuse heat-fused HDPE piping system has a service life of more than 100 years and a **zero allowable leakage rate** (ASTM F2164). AquaFuse is available in sizes from 1 in. to 63 in. (imperial) and 25 mm to 1600 mm (metric) in outside diameter.

The CorrDrain corrugated HDPE piping system offers a 25-year limited warranty against manufacturing defects and includes on-site, hands-on installation training. The CorrDrain corrugated HDPE piping system offers a service life at least 100 years (and is available in sizes up to 120 in.).

Our AquaFuse HDPE pipe, valves, and fittings are produced on the latest, state-of-the-art manufacturing equipment, under very strict quality control standards. Our AquaFuse piping system is priced very competitively, including delivery to international and domestic destinations.

PVC/MDPE/Ductile Iron – Pipe, Valves, and Fittings

CMF Global, Inc. is a supplier of Medium Density Polyethylene (MDPE) pipe, valves, and fittings; Polyvinyl Chloride (PVC) pipe

and fittings; Ductile Iron valves and fittings; and copper wire and associated products.

We supply a wide variety of electrical products, including wire, cable, conduit, fittings, grounding products, and splicing products.

Specialized HDPE Fittings

CMF Global is the exclusive worldwide supplier of the AquaFuse fusible branch saddle (pat. pend.). This product allows an inexpensive, leak-free connection to HDPE lateral pipes in agricultural, landscape, and golf irrigation systems. The fusible branch saddle is fused onto the lateral piping using our specialized tool (pat. pend.). These fittings are specified by brand name for major irrigation projects around the world.

HDPE Fusion Equipment

CMF Global is the exclusive distributor of McElroy Fusion Machines in the Philippines. The McElroy Company invented the butt fusion machine in 1954. It is considered the gold standard for HDPE butt fusion machines in the world. CMF Global can also supply electro fusion equipment with GPS mapping capability, so that the exact location of every fitting is accurately documented, as well as socket and sidewall fusion equipment.

Hydroelectric Power Plants

CMF Global is your single-source supplier for all of your power generating equipment including the turbine, generator, mounting frames, turbine inlet valve, automated controls, switchgear, and electric transmission cable.

Efficiency and durability are the highest priorities for our powerhouse packages. Turbines are closely matched with generators early in the design stage to ensure optimum integration and efficiency. Generators are selected to meet the rigorous demands of hydroelectric environments. Embeddable mounting frames are carefully designed and fabricated to ensure precise alignment between turbine-generator components.

Controls and switchgear are engineered to meet the intertie requirements and control schemes of each individual project. For stand-alone projects, complete electro-hydraulic governing systems are employed to provide stable, utility-quality power for remote sites.

APPLICATIONS

HDPE piping is both highly reliable and extremely durable for the most demanding applications. For example, a 36 in. (915 mm) HDPE pipe line has now replaced the Carbon Steel piping in the

Essential Service Water System (emergency cooling system) of the Callaway Nuclear Power Plant in Fulton, Missouri.¹

Water Transmission and Distribution

High Density Polyethylene (HDPE) municipal water piping is manufactured to strict AWWA, ASTM, and NSF industry standards to provide decades of safe, trouble-free operation. Used in potable water applications since the 1970s, HDPE pipe is the fastest growing material used for transporting drinking water due to its tough, resilient properties.

HDPE pipe is lightweight, leak-proof and resistant to chemicals (including salt). Low temperatures do not cause failure and there are no damaging effects from freezing and thawing. The superior flow characteristics of HDPE pipe maintain optimum flow rates which reduces pumping costs. HDPE has exceptional surge tolerance, which means safe operation at higher flows and velocities, no thrust blocks are needed, and there is no loss of treated water. Heat-fused joints reduce installation time and ensure a leak proof system, which results in substantial cost savings. Thrust restraints are not required, resulting in even more savings. The use of trenchless installation technologies can further reduce system installation costs.



¹ See: <http://www.dow.com/plasticpipes/na/pdf/782-02001.pdf>



Our HDPE pipe meets AWWA standards C-906, C-901 and NSF standard 61 for drinking water. Most importantly, the durability and integrity of HDPE pipe makes it the permanent, most cost-effective choice for your water transmission/distribution application.

Irrigation – Commercial, Agricultural, and Golf

CMF Global supplies components for complex landscape, agricultural, and golf irrigation systems. These systems can include pump stations, main and lateral piping, valves, fittings, wire, controllers, and sprinklers. These systems may also include our proprietary specialty fittings.

CMF Global can supply and deliver a complete golf course, landscape, or agricultural irrigation system anywhere in the world – everything from pump stations to sprinklers.

Sewers

High-Density Polyethylene (HDPE) has been used in municipal and industrial sewer applications for over three decades. HDPE pipe offers resistance to corrosion, abrasion, and chemicals with durability, strength, and cost-effective installation.

Hydrogen sulfide corrosion is a serious threat to conventional sewer lines, sometimes halving the service life. But HDPE pipe is not attacked, corroded, or degraded by hydrogen sulfide, assuring long service and effective use of the water system budget. HDPE pipe is also immune to most chemicals, microbiological agents, and scale buildup. It will not rust or deteriorate and is proven to be fully resistant to the forces of organic and inorganic corrosion. Flexibility and leak-free joints solve many unique problems that rigid concrete, PVC or ductile iron pipes cannot. Leak-free heat fusion joints keep effluent inside the system and prevent infiltration that can overload treatment systems.

HDPE pipe has proven to be a reliable, long-term solution for sewer and wastewater systems such as: forced sewer mains, pipeline rehabilitation, trenchless pipeline replacement, combined storm and sanitary sewer lines, sludge lines, intake and outfall lines, culvert relining and digester lines. Lightweight, easy-to-install HDPE pipe saves considerable time and money, making it the ideal piping solution for sewer applications.

Industrial and Mining Applications

For long-term trouble-free service in industrial and mining applications, it is critical that an industrial-grade pipe system withstand daily pressure fluctuations and resist the corrosive and abrasive effects of the aggressive materials that pass through it, such as acids or salts commonly found in mines. HDPE pipe fills the need with low resistance to flows, leak-free fusion joints, toughness, abrasion resistance, tolerance for variable operating conditions, and exceptional long-term performance. It has low installation and maintenance costs, and lengths of pipe are joined using heat fusion on site. It is used in mining applications for water management, such as: conveying or drainage pipe, river water diversion, sewer, and sub-drainage systems. HDPE pipe is lightweight, flexible, and very durable in challenging applications. With its higher flow coefficients, exceptional chemical and abrasion resistance, and superior design life, HDPE pipe is the ideal piping solution for Industrial and Mining applications.

Oil and Gas Gathering

CMF Global supplies American Petroleum Institute API 15LE, ASTM D2513, and ASTM F2619 high performance HDPE pipe, valves,

and fittings (in sizes from ¾ in. - 54 in.) for oil and gas gathering/transmission operations: Gas Gathering, Oil Flow Lines, CO₂, H₂S, Brine, Oilfield Water, and mixed fluids.

The pipe's flexibility and reliability make it the ideal piping solution for the energy business. The smooth inner wall of the HDPE pipe provides low resistance to fluid flows, and its exceptional slow crack growth resistance assures long-term service in demanding conditions.

Gas Distribution

CMF Global supplies polyethylene pipe for gas distribution applications. Meeting the industry standards of API 15LE, ASTM D2513 and ASTM F2619, we are able to offer a vast product offering of pipe, valves and fittings. Small diameter High Density Polyethylene (HDPE) and Medium Density Polyethylene (MDPE) pipe is flexible and available in coils, making it easy to handle during installation. Polyethylene is known for its resistance to corrosion, abrasion, and microbial growth. It is a leak-free piping system which is ideal for gas distribution applications, in which the operation can function effortlessly at peak levels while maintaining the security of your facility, people, and the environment.



Wide Range of Applications – from Golf Course Irrigation to Nuclear Power Emergency Cooling System



Storm Water Retention System

Factory Mutual (FM) Approved Fire Suppression Systems

FM Approved HDPE water pressure pipe is suitable for municipal and industrial underground water fire protection systems. FM Approved HDPE water pressure pipe is available up to 36 in. in diameter. Other FM Approved products include valves, fittings, and fire hydrants.

Drainage And Storm Water Retention/Detention Systems

CMF Global supplies a complete line of HDPE drainage and storm water retention/detention products. Storm water management systems are designed to treat storm water to remove debris collected in runoff including, trash, sediment, oils, and other suspended solids.

HDPE storm water systems offer an extremely cost-effective alternative to heavier reinforced concrete units and can be installed quicker and with smaller equipment, allowing further cost savings.

HDPE underground storage systems allow developers and land owners to use land as efficiently as possible by storing storm water runoff underground while using the surface area for parking, recreation, or other similar

HDPE Pipe with Concrete Ballast Weights

applications. An underground storage system also helps to reduce safety and health risks, since the system is completely inaccessible to the general public. Underground storm water detention eliminates the aesthetic and maintenance issues associated with above ground systems.

Our underground storage systems are tailored to meet the project specific size, shape, and storage requirements.

Hydroelectric Power Generation

CMF Global is an authorized distributor of hydroelectric power generation plants from Canyon Hydro. Canyon Hydro designs and manufactures small hydro systems ranging from 4kW to 25MW. These systems deliver a high return on investment (ROI) for many years because of (1) very efficient design and implementation, (2) long term reliability, and (3) expert customer support. Canyon Hydro has been designing, manufacturing, and installing these systems for more than 35 years.

Water-to-Wire Packages. These hydroelectric systems supply electricity to public utilities and independent power producers. The electricity can be used for a stand-alone operation or transferred to the public utility grid. It is possible to connect

a small hydroelectric system to the utility grid in such a way that it draws power from the grid during peak usage times and feeds excess power to the grid when power usage is low. It is also possible to generate electricity for stand-alone operations for remote communities or applications.

Energy Recovery from Existing Water Systems. These specialized hydropower systems are designed to integrate with municipal water systems, irrigation districts, and other existing infrastructure to generate electricity from the excess pressure developed as water is piped from higher elevations.

These types of projects use a turbine to perform the function of a Pressure Reducing Valve (PRV) while producing electricity and accommodating highly variable flow, consumer usage, and downstream pressure requirements.

Services. Canyon Hydro offers a complete Turbine Inspection Service providing a comprehensive report on system conditions, including photos of key components and hydraulic surfaces as well as specific recommendations for improving system output. Canyon Hydro has the expertise and machinery to repair, rebuild, or replace existing hydropower components from individual parts to the entire water-to-wire package.

SERVICES, CERTIFICATIONS, AND EXPERIENCE

On-Site Training And Support

We provide on-site, hands-on AquaFUSION installation training and support for the field installation of all HDPE/MDPE piping systems. This assures that the installation crews are up-to-date on how to properly install the AquaFuse and CorrDrain systems. The AquaFUSION training is done in the field at the time their system is going to be installed.

International Consolidation and Shipping

We are experts in consolidating and shipping many items in a single order, making our customer's procurement process easier and reducing total procurement costs.

Export Financing

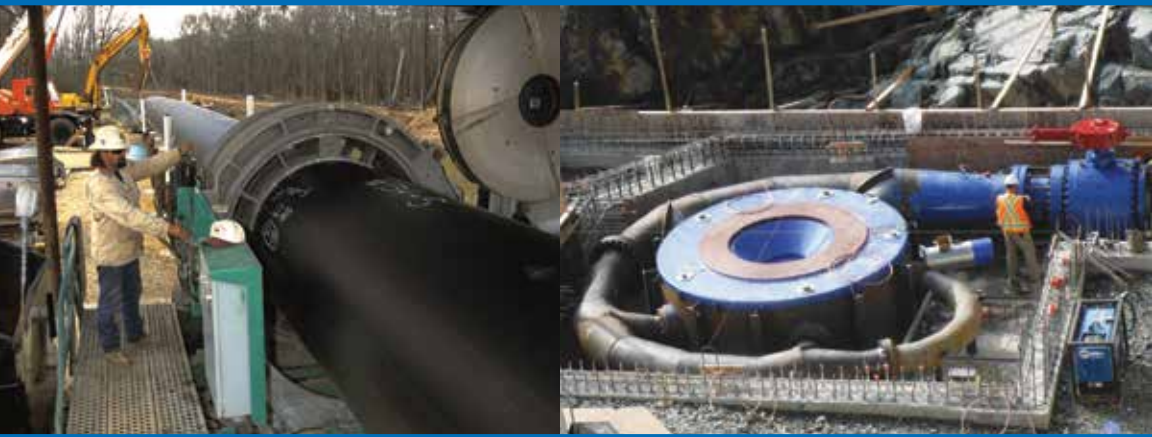
Because our products are of U.S. origin, they qualify for attractive financing terms through programs created by the Export-Import Bank of the United States. We work with the Export-Import Bank of the United States, to offer medium-term, and long-term financing to many qualifying international projects.



Containerizing Pipe



Hydroelectric Facility



HDPE Pipe Fusion

Infrastructure projects may also qualify for attractive financing terms through Multilateral Development Banks such as The World Bank, The Asian Development Bank, The African Development Bank, or The Inter-American Development Bank Group.

Our staff includes experts in material financing through both the Export-Import Bank of the United States and Multilateral Development Banks.

In addition, CMF Global accepts letters of credit with deferred payment provisions.

Experienced Exporter

From its inception, CMF Global has been an exporter of U.S. goods. We have shipped products to: Italy, Azerbaijan, Kazakhstan, Russia, Nepal, Egypt, Iraq, Jordan, Pakistan, Dubai, Qatar, Abu Dhabi, Ras al Khaimah, Sharjah, Ajman, Oman, India, Vietnam, Malaysia, Singapore, Indonesia, Cambodia, Myanmar, Thailand, China, the Philippines, Taiwan, South Korea, Japan, Hong Kong, Guam, Canada, El Salvador, Chile, Brazil, Honduras, Paraguay, Peru, Colombia, Costa Rica, Mexico, the Dominican Republic, Nigeria, Uganda, and Liberia, as well as within the United States.

Hydroelectric Turbine Construction

We are experts at quoting, consolidating, and shipping products to remote locations around the world.

Awards

CMF Global received the **2012 Exporter of the Year Award** for San Diego and Imperial Counties from the World Trade Center San Diego.

CMF Global received the **2013 Exporter of the Year Award** for San Diego and Imperial Counties from the U.S. Small Business Administration.

Certifications

CMF Global is a Minority Business Enterprise (MBE) (1) certified by the Supplier's Clearinghouse for the California Public Utilities Commission and (2) certified by the National Minority Supplier Development Council (NMSDC) represented by the Pacific Southwest Minority Supplier Development Council. CMF Global is also an MBE-aligned subscriber of the Dallas/Fort Worth Minority Supplier Development Council.

CMF Global is a Disadvantaged Business Enterprise (DBE) (1) certified by the California Department of Transportation and (2) certified by the Arizona Department of Transportation.

RECENT PROJECTS

Brazil: Rio 2016 Olympics — The Olympic Golf Course

Recently we shipped the complete irrigation system for the new Olympic Golf Course in Rio de Janeiro, Brazil, which will be used during the Rio 2016 Olympics. This required the shipment of seventeen 40-foot High Cube containers carrying 203 separate product line items in a single vessel. CMF Global supplied everything from the pump station to the sprinkler heads, including but not limited to the pipe, the valves, the fittings, and the wire. In addition, CMF Global conducted a week-long AquaFUSION HDPE training course at the job site, as the product was prepared for installation, to insure that the installation operators were properly qualified to fuse the HDPE pipe and fittings.

Iraq: 19,000 meters of Large Diameter Pipe

CMF Global recently supplied 19,000 meters of large diameter pipe for water transmission applications to Iraq. The pipe is from 30 in. to 63 in. in outside diameter.

It required a total of 195 40-foot High Cube containers to ship this project to the port of Umm Qasr, Iraq.

China: 27-Club Irrigation System

Recently, we shipped the complete irrigation system for the prestigious 27-Club Project to China. It required 40 containers to transport these products from the Port of Los Angeles/Long Beach to the jobsite in Tianjin, China. All the products were from U.S. manufacturers. It included our own High Density Polyethylene pipe and valves – the AquaFuse system. It also included more than 75 different products from various other U.S. manufacturers. This complete system, shipped from the U.S. and delivered to the jobsite in Northern China, included every component necessary to install the irrigation system at the job site. We also conducted the AquaFUSION on-site fusion training to insure that the HDPE products were properly installed and that they operate without difficulties. This HDPE piping will operate for more than 100 years with zero leaks – thus conserving precious water. We are very proud of this project, because China is well known for exporting these types of products to other countries.



Lengths of CMF Global's AquaFuse HDPE pipe in Rio de Janeiro, Brazil

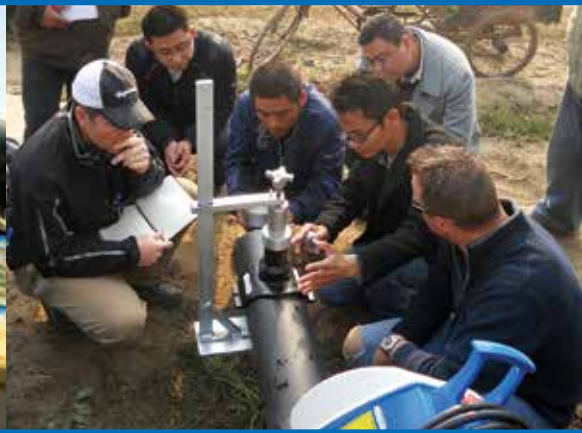


AquaFUSION week-long training session in Rio de Janeiro, Brazil

To learn more about CMF Global's products and services, visit:
www.cmfglobal.com



Pipe after delivery to Iraq: Just one of three rows of stacked pipe



CMF Global's AquaFUSION one-week training program in Tianjin, China

SUMMARY

CMF Global's proprietary AquaFuse piping system is the right choice for your High Density Polyethylene piping applications because of: zero leakage rate from heat-fused joints; lower installation and transportation costs; 100-year minimum projected service life; 25-year limited warranty against manufacturing defects for potable water applications; on-site, hands-on AquaFUSION fusion training; high performance resin (PE4710/PE100) and state-of-the-art extrusion equipment; and strict quality control.

CMF Global supplies CorrDrain corrugated HDPE drainage pipe and fittings; FM Approved firefighting system pipe, valves, fittings, and hydrants; MDPE pipe, valves, and fittings; PVC pipe and fittings; Ductile Iron valves and fittings; and copper wire, and associated products.

CMF Global is the worldwide exclusive supplier for the specialized, proprietary AquaFuse HDPE fusible branch saddles (pat. pend.) and for the specialized fusion installation tool (also pat. pend.).

The AquaFuse HDPE fusible branch saddles reduce both costs and leakage in landscape, agricultural, and golf irrigation systems and are specified by name in many large scale irrigation projects.

CMF Global is the exclusive supplier of McElroy Fusion Machines in the Philippines. We can also supply a variety of electro fusion, socket fusion, and sidewall fusion equipment.

CMF Global simplifies the pipeline material procurement process for its customers, (1) by supplying high quality pipeline construction components, (2) by consolidating complete pipeline systems in a single shipment, (3) by quoting and delivering products to remote locations worldwide, (4) by verifying shipment quantities prior to shipment, (5) by including full, on-site AquaFUSION training at installation time for our products, and (6) by offering internationally accepted terms of payment and financing, including Exim Bank guaranteed financing and deferred payment letters of credit, in appropriate cases.



CORPORATE OFFICE:
2445 Fenton Street
Chula Vista, CA 91914-3517
U.S.A.

Telephone: +1-619-869-8919
Fax: +1-619-330-4532

GLOBAL OFFICES:
Amman, Jordan – Manila, Philippines – Cebu, Philippines

www.cmfglobal.com